



INTEGRATED GEOREFERENCED  
INCIDENT MANAGEMENT SOFTWARE FOR  
COMMAND-AND-CONTROL CENTERS.

**MultiVis Fusion** enables the monitoring, integration and management of numerous types of digital assets, simultaneously and in real time. This is made possible by providing intelligent real-time data capture and intelligent visualization (with multi-layer mining and digital overlays) in a unified view.

**Beyond situational awareness, MultiVis Fusion aims to provide your organization with situational readiness.**


















## THE TOTAL AWARENESS PLATFORM

**MultiVis Fusion** provides operational crews with situational awareness and knowledge of ongoing events, as well as the available resources to address needs quickly. For managerial posts, it enables situational readiness, facilitating quick decision-making, medium and long-term planning, and improved management efficiency.

The platform allows georeferenced integration with numerous systems, sensors, and databases, such as surveillance cameras, GPS trackers, physical sensors, access controls, intrusion sensors, fire detection, ongoing construction works, signaling and traffic control, etc.



## FEATURES

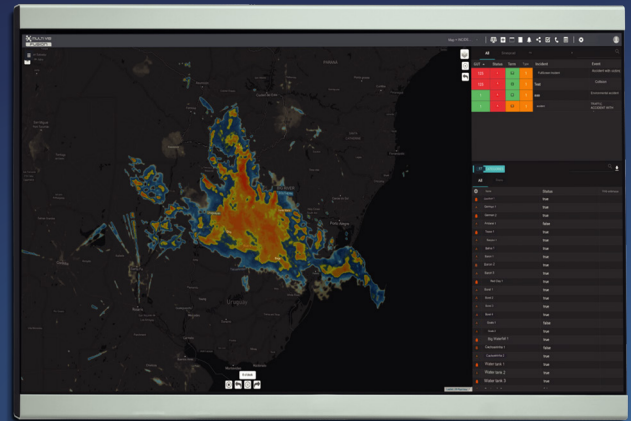
-  Web-based interface
-  Multi-user implementation
-  Intuitive set up and ease of use
-  Cross-platform and Cross-device, integration with various devices and platforms
-  Geographic monitoring with integrated alerts and alarms, relative to the communication process
-  Workflow automation
-  Faster response times
-  Easy scalability
-  Decoupled service-oriented environment
-  Enterprise service backplane
-  Improved connectivity and integration between systems and applications
-  Enhanced governance and security of integrated processes
-  Open-source map
-  Possibility of other maps - e.g., floor plans (different levels, floors etc.)

## OPERATIONS

The Operations module is the core part of the platform, where all real-time information is available and presented in the form of maps, lists, and tables. The module is divided into sub-modules that can be customized according to the user's preferences:

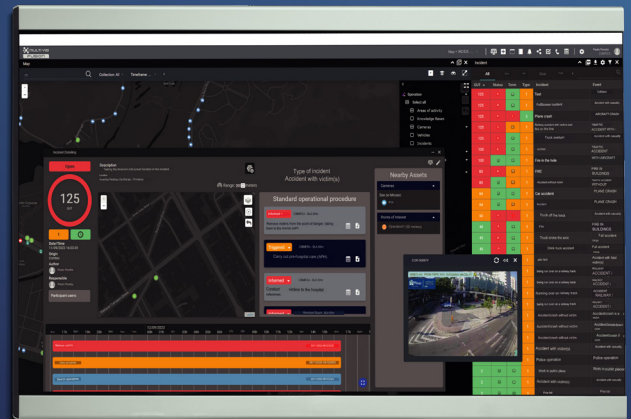
- Profile
- Presets
- Incident Panel
- Impact Detection
- Tasks
- Collaboration
- Layers
- Alarm Center
- Knowledge Bases
- Map
- Cameras

Menu Driven Interface:  
allowing easy and  
intuitive access  
to different modules.



## CAMERAS

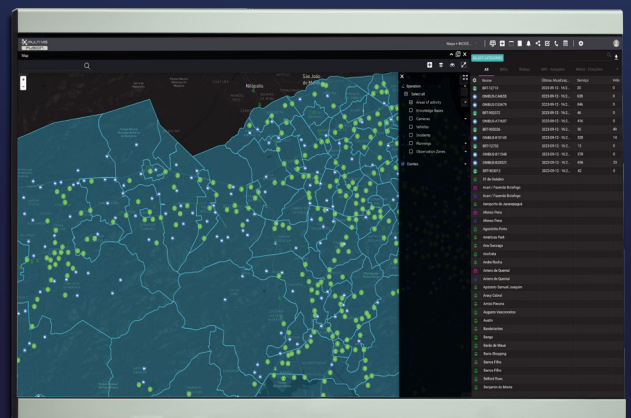
A mosaic of cameras monitors different regions of a city, facility or a specific location.



## ADMINISTRATION

The Administration module of **MultiVis Fusion** contains all platform settings, such as creating agencies and users, groups, inserting and editing layers, and platform parameterization:

- Settings
- Parametrization
- Alarms
- Acces Profile
- Users and Groups
- Collections and Modules
- Messaging
- Maintenance



# DECISION AND COMMAND

Integrating key services into a connected environment can increase the efficiency and resilience of the infrastructure that supports day-to-day activities in operational centers.

**MultiVis Fusion** was conceived and designed to provide those centers with world-class infrastructure to respond to incidents in a cohesive and transparent manner.

MultiVis Fusion provides the five steps necessary in an incident management plan:

- Identification
- Categorization
- Prioritization
- Response
- Closure



## Global Support

MultiVis provides worldwide support for its software and hardware with 24x7 onsite support over 140 countries.

✉ [sales@multivis.com](mailto:sales@multivis.com)  
🌐 [/company/multivis/](https://www.multivis.com/company/multivis/)  
🌐 [multivis.com](https://www.multivis.com)

🌐 [multivis.com/#support](https://www.multivis.com/#support)  
✉ [support@multivis.com](mailto:support@multivis.com)

